

Preservation

Chapel of St. John the Divine

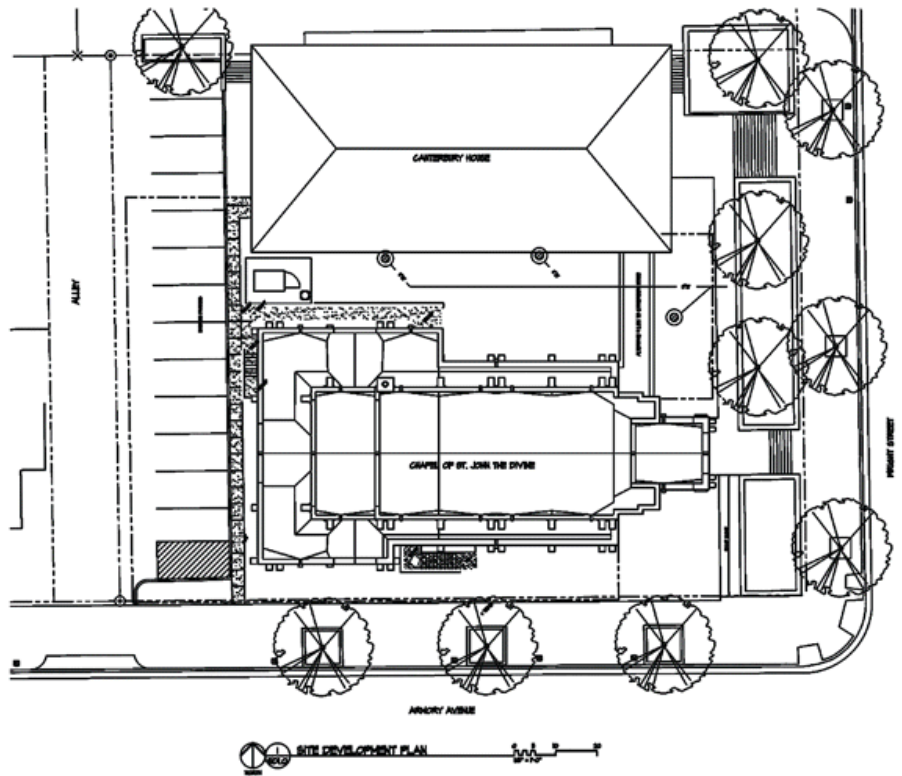
Project Location: Champaign, Illinois
 Completion/Design Date: 2008

IGW Architecture (Planning, Architecture, Interior Design):

James R. French, S.E. (Structural Engineering)
 Engineering Concepts and Solutions
 (Mechanical / Electrical Engineering)

This project involved the expansion and renovation of an existing church facility. Originally designed in 1925 as an eight bay, perpendicular gothic church, only three bays of the original design and a temporary wood frame chancel and sacristy were constructed before the 1929 depression stopped progress. After seventy-five years, the current congregation and alumni renewed their commitment to complete the Chapel commissioning the design in 2005.

The new design addresses the primary project goals of increasing the nave seating by fifty and completing the Chapel in a manner compatible with the existing neo-gothic architecture. In addition, the design provides for increased sacristy and other Chapel support space, central air-conditioning, and a number of code-mandated improvements including accessibility. After the demolition of the wood frame portion of the original Chapel, two higher bays, one for the nave expansion and one for the chancel, were constructed along with lower sacristy space. The addition was designed with a





SOUTH ELEVATION - EXISTING + NEW CONSTRUCTION

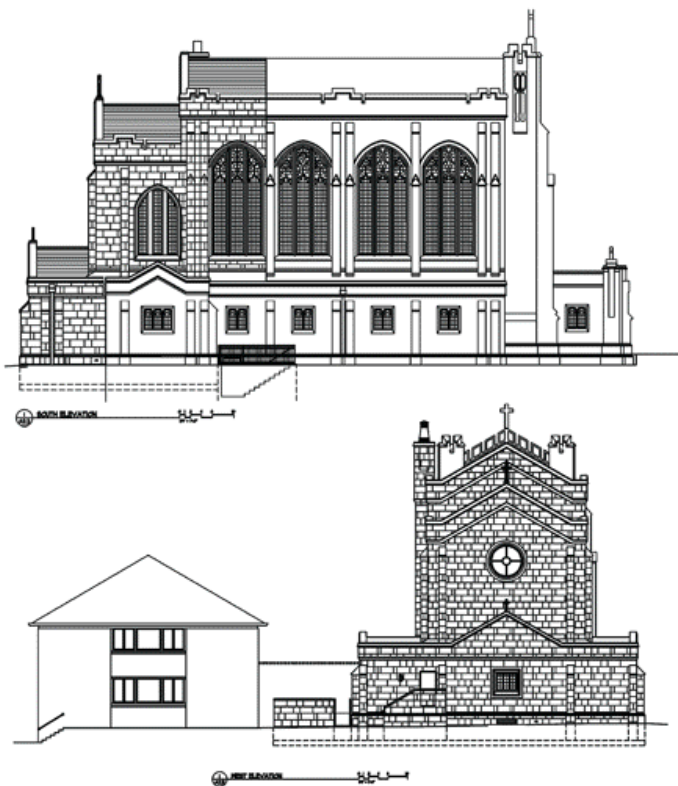


PARTIAL INTERIOR - EXISTING + NEW CONSTRUCTION

stone exterior sympathetic to the existing Chapel which was constructed of highly detailed natural limestone. The massing, window forms and banding of the addition are consistent with the original Chapel design with a slightly reduced level of detail in response to a limited construction budget.

The design addressed several structural challenges during construction to stabilize the existing structure for the demolition and construction activities as well as difficulties due to the height of the structure and a very restricted site in a busy portion of a college campus. A steel frame was erected and braced and then poured concrete walls were used to infill around the steel with the final cladding of limestone following behind. The interior Nave expansion is clad in limestone to match the existing Nave with floor tile and stained glass windows also designed to blend with the existing building. Considerable effort was expended to maintain the bright and lively acoustics and enhance the sound of the existing pipe organ and choir. The Chancel is finished very simply to provide a neutral background for the seasonal vestments and highlight the celebration.

Construction started in 2006 and completed in 2008.



INTERIOR VIEW LOOKING WEST